



YELLOWHEAD CHIEFS TEAM HANDBOOK

Welcome

Congratulations on being selected to participate for the Yellowhead Chiefs AAA Hockey Program!

Focus For THE CHIEFS

We want to maximize your time as a Chief and create memories on and off the ice. Our program philosophy is to create an outstanding, competitive hockey experience that develops talented young hockey players who play with heart, for their team and the love of the game.

What does this Mean?

- ✓ Everyone have fun and enjoy the experience!
- ✓ Player's love coming to the rink, being with their teammates, working hard and getting better
- ✓ Parents are positively engaged and love watching their kids and teammates play.
- ✓ We all learn from each other

How do we do that?

Working together as a community of parents, players and coaches, we will create an experience for these young players that will make them better hockey players, teach them the importance of team and provide valuable life skills.

Our "Chief Program" Guiding Principles:

- Development - prepare players for the next level by improving skill, game knowledge
- Team - create a "team first" attitude and give every player the opportunity to feel part of the team
- Character - promote core values of respect, confidence, hard work, sportsmanship and selflessness
- Accountable - every player, coach and parent are accountable for their actions and behaviour – attitude, effort and choices
- Players earn their ice with a positive attitude, a commitment to team and showing maximum effort.
Attitude, Effort, and Choices (you make) will be in focus – these three things we all control.



Table of Contents

Overview, Guidelines, Resources, Reference Materials

- 1. Chief History**
- 2. Chief Program Goals**
- 3. Region and Community**
- 4. Organizational Structure**
- 5. Budgeting Guideline Template**
- 6. Coach's agreement Template**
- 7. The Chief Player Pass**
- 8. The Chief Brand Guideline Booklet**
- 9. EXPECTATIONS OF COACHES, PLAYER, PARENTS**



1) CHIEF History

The Yellowhead Chief AAA program has evolved over the years by going from 1 team in 1988 to 4 teams today. This has resulted in 70 to 80 young male and female athletes representing the Chief brand each and every season. Through hard work and dedication by all parents, volunteers and sponsors over the years, the Chief program has played a key role in countless players hockey career advancement to college, Junior and the NHL. Chief alumni are proud to be part of a special Chief legacy that forms lasting bonds for years to come.



2) CHIEF Program Goals

Yellowhead Hockey takes great pride in all of our Yellowhead Chiefs AAA organizations. We are committed to the overall health and well-being of all levels of hockey within the region, right from the grassroots through to the AAA programs. Hockey is the best sport in the world and important for our kids and our communities. We want to see it grow and thrive at all levels. Yellowhead Hockey boasts 2 female and 2 male Yellowhead Chiefs AAA programs within our region. We are very proud of the fact that all 4 of our teams compete well in the highest level of minor hockey in the province. We believe Yellowhead can continue to be a leader in the great sport of Hockey, right from grass roots initiatives through to our AAA programs. And we believe that in order to do that, we need celebrate our successes while always learning, adapting, growing and investing in our future generation. The Chief program is here today for us to enjoy because of the vision and countless hours put in by previous parents, volunteers, sponsors. We will forever be grateful and continue to work hard to build and grow.

3) Region and Community

The Yellowhead Hockey region has committed all 4 Yellowhead Chief AAA programs to the Shoal Lake Communiplex. Since the inaugural Chief season in 1988, Yellowhead Hockey has enjoyed its relationship with Shoal Lake and its willingness and ability to host our regional AAA program. All great relationships are also great partners, and the Yellowhead Chief program is pleased to be a primary tenant that contributes a significant amount of dollars each year to the Shoal Lake communiplex. We are also proud



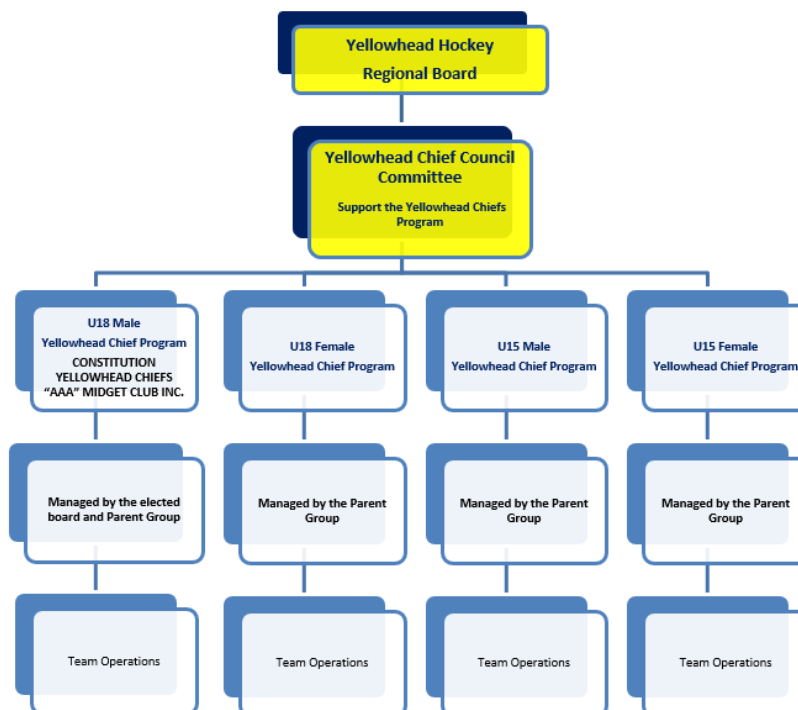
to contribute to the economic stimulus of the Shoal Lake Community and the surrounding area by having 4 teams now housed in the facility.

The Yellowhead Chief program needs to continue to grow and develop in order to stay viable and provide opportunities to our young and aspiring athletes. It needs a home facility that is modern to entice kids to attend and entice coaches to want to take part and lead the program.

With this commitment, we look forward to continuing to work with the Shoal Lake Communiplex to build and grow the Chief program for years to come.



4) Organization Structure







General & Administrative					<p>The primary budgeting goal is to plan and follow the budget for the best season possible with the need to leave a \$5000 to \$8000 balance at year end for the next team to start with.</p> <p>Depending on how the team does financially based on sponsorships, gate revenue, 5050, playoffs etc, each team should be able to set it fee's accordingly and have each player raise the targeted funds required to operate as efficiently as possible.</p> <p>In the unlikely event a deficit occurs at year end, the deficit could be divided by the number of players and each player will be asked to pay that amount.</p> <p>Excess funds over and above the required \$5000 to \$8000 are expected to remain with the team and reinvested into the teams and program itself to ensure the long term viability.</p>			
Accounting & Legal (Year end books audit)	\$	-	\$	-				
Advertising & Promotion	\$	-	\$	-				
Business Fees & Licence	\$	-	\$	-				
Donations	\$	-	\$	-				
Insurance	\$	-	\$	-				
Prov & Tourn Fees	\$	-	\$	-				
Interest & Banks Charges	\$	-	\$	-				
Office Supplies	\$	-	\$	-				
Ticket Expense	\$	-	\$	-				
Rent	\$	-	\$	-				
Repair & Maint	\$	-	\$	-				
Misc Exp	\$	-	\$	-				
Scholarship	\$	-	\$	-				
Telephone	\$	-	\$	-				
Travel & Ent	\$	-	\$	-				
	\$	-	\$	-				
Total Gen & Admin	\$	-	\$	-				
Total Expense	\$	-	\$	-				
Net Income (Loss)		\$0.00	\$	-				
Minimum Ending Balance Required For Next Team Start Up		\$5000 - \$8000						

6) Coaches' agreement Template (Full agreement hosted on website)



Yellowhead Chief Coaching Arrangement

Between coach _____ and the Yellowhead Chiefs AAA _____ Hockey Club.

Date: August, 2023

Offer:

- This Yellowhead Chiefs AAA _____ program will retain the services of _____ as Head Coach of the specified team noted above and as detailed in the position overview below.
- A base stipend value of \$_____/month or a base value of \$_____/season as noted/to be noted in the team's annual budget has been agreed to by both parties.
- YC will pay mileage at a rate of .45cents per KM up to a maximum value as set in the team's annual budget. (Yearly KM estimate needs to be noted for budgeting purposes) Car pooling is strongly encouraged whenever possible to stay within the budget.
- YC will cover coaches team meals while on the road with the team up to a maximum value as set in the team's annual budget.
- YC will pay for coach's hotel rooms while on the road with the team up to a maximum value as set in the team's annual budget. Sharing a room for those of the same gender is encouraged. The team will budget accordingly.
- Yellowhead Hockey regional board, along with the YCCC committee (Yellowhead Chief Council Committee) will support your efforts as required to ensure team and program objectives are being met both short and long term. YCCC will conduct reviews as needed throughout the year, and conduct a yearend review.
- Yellowhead Hockey and the Yellowhead Chiefs program strictly adhere to the code of conduct coaching policies as set out by Hockey Manitoba and Hockey Canada and will follow the zero tolerance guidelines provided.
- Yellowhead Chief head coaching positions report directly to the Yellowhead Hockey director who is supported by the YCCC committee.



7) The Chief Player Pass (Hosted on Website)



Yellowhead Chief AAA Program

All Home Games Player Pass 2022-2023 Season

Oct 1, 2022

The Yellowhead Chiefs program is proud to host 4 regional AAA teams resulting in 70 to 80 young athletes representing the Chief brand each and every season. These kids are proud to be a Chief and proud to be part of something special.

New to this season, a fantastic idea was tabled by several parents and discussed at a few of our team parent meetings to create a **Chief Player Pass** to allow all current Chief players to attend any Chief home game free of charge. U18 Female, U18 Male, U15 Female, U15 Male.

All Chief players are part of the team. This is a small gesture to encourage them to work together, support each other and cheer each other on even more.

Chief Player Pass 2022/2023

All rosters are on the websites and names can be verified if required. But the kids proudly wearing their Chiefs gear to the game and simply introducing themselves, their team and their number at the gate will be the best ticket required!

8) The Chief Brand Guideline Booklet (Full Version Hosted on Website)



9) EXPECTATIONS OF CHIEF COACHES, PLAYER, PARENTS

Our Coaches will

- ✓ always be prepared for practices, games and team events
- ✓ teach the skills and the game of hockey to the best of our abilities
- ✓ provide open communication and transparency with all aspects of the team
- ✓ deliver a positive hockey and team experience
- ✓ ensure players feel valued and want to be part of the team
- ✓ be role models both on and off the ice
- ✓ create a positive learning environment - Positive coaching/feedback
- ✓ Ensure the players education will remain a cornerstone of the program by checking in on and supporting the players educational needs and encourage being strong student athletes.



Our Parents will

- ✓ agree to support your team philosophy, rules and objectives. Collectively, we are here for the players and to make it the best experience possible. While remembering this is a game, it is AAA hockey that requires a significant commitment.
- ✓ Open communication is required in person with team liaison/rep to avoid misinterpretation.
- ✓ It is understood, that if an issue arises, the process to handle it is 1) Depending on the severity, each individual team would deal with them internally after the 24-hour rule and through their team manager

or parent liaison that they put in place. 2) If the issue is outside of that scope, YCCC would then assist in dealing with the issue. 3) If it is beyond the scope of the YCCC, the Yellowhead Hockey Board and or Hockey MB would then be brought in to assist.

✓ Adhere to Hockey Manitoba and Hockey Canada's rules and regulations at all times – fully understanding the zero tolerance policies that are in place.

Our Players will Create an environment that supports the values of our team, including:

✓ We focus on what we can control - positive attitude, 100% effort and our actions/behaviour. We don't complain on things we can't control (bad break, bad calls)

✓ We always treat parents, players, coaches, officials, opponents with respect

✓ We do not showboat, mock opponents, slam sticks or blame officials

✓ We never blame our teammates

✓ We follow the team dress code

✓ We do not use personal electronics in the change room

✓ We do not swear or use derogatory language in public, or on the ice

✓ We understand there is zero tolerance of verbal, physical or social bullying

✓ We arrive at the rink prepared to work hard.

✓ After each practice and game we will leave a clean dressing room.

✓ Ensure their schooling remains a top priority while balancing their hockey commitment – and being sure to ask for help and guidance when needed.





The Legacy of Our Yellowhead Chief AAA Program Style of Play

Hard working teams that play with grit and determination. We take pride in winning every battle. We are relentless on the back check and powerful on the fore check. We celebrate great defensive plays and unselfish offensive plays. We never quit.

By the end of the year, the Chiefs expect to be known as the:

- ✓ Hardest Working Team
- ✓ Most Respectful Team
- ✓ Toughest team to play against
- ✓ Team that has the most fun/enjoyment

Ice Time Philosophy to keep in mind

✓ This is a group of extremely talented athletes, which is why you were selected to join the Yellowhead Chiefs. AAA coaches believe that fair ice is earned through effort, a commitment to team play and a great attitude. Situational coaching decisions may be implemented as required in a fair and respectful manor.

✓ A poor attitude, lazy penalties and undisciplined play will not be rewarded with ice time.



Players – A few final thoughts

- The objectives for the team and the actions of the coaches will be focused on building confidence, self-esteem, discipline and a sense of commitment and pride in your team, in the Chiefs program and in yourselves. These personality traits and qualities will benefit you at whatever level they play.
- It is the coaches' goals to help you develop strong skills, challenge you and have you identify individual and team goals and develop a plan to achieve them.
- Expect nothing less than your very best effort (including listening) at all times and this combined with being the best team mate they can, is very important.
- It is important that you are prepared and ready to play
- Coaches will do their best to create an environment that keeps you interested and motivated to come to the rink. Practices will be run with a high level of energy and effort, with the goal of this being translated into game situations.
- It is your responsibility to begin thinking critically as it applies to your performance in practices and games to identify areas for improvement as well as areas of strength both as an individual and as a member of the team.





Thank you for taking the time to read our **Chiefs Team Handbook**.

Please sign below, remove this page and return to your team manager.

Date: _____

Team: _____

Player: _____

Parent: _____